

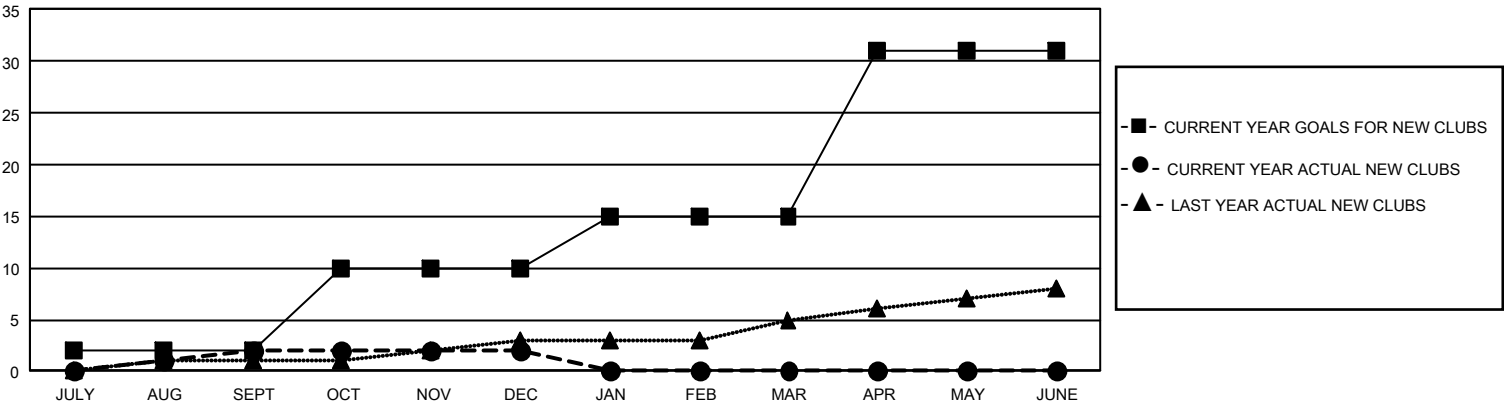


GMT Constitutional Area 1, Group C

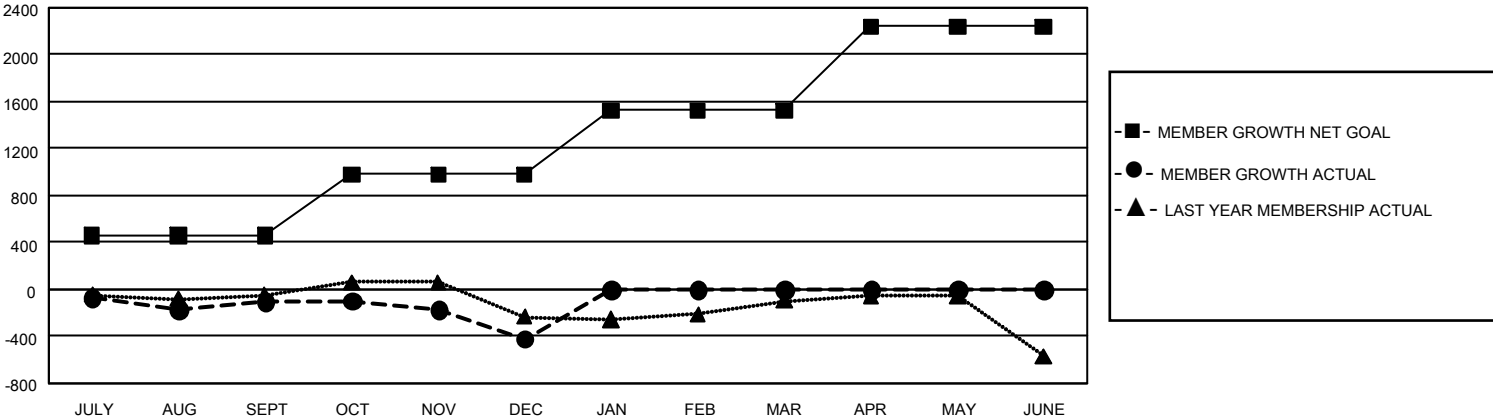
REPORT DOES NOT INCLUDE CLUBS IN UNDISTRICTED AREAS.

Clubs				Members			
RESULTS FOR 2024-2025				RESULTS FOR 2024-2025			
QUARTER	NEW CLUB GOAL	NEW CLUBS	DROPPED CLUBS	QUARTER	MEMBER GROWTH NET GOAL	MEMBER GROWTH ACTUAL	DROPPED MEMBERS ACTUAL (including transfers)
JULY/AUG/SEPT	6	2	1	JULY/AUG/SEPT	455	925	941
OCT/NOV/DEC	24	0	9	OCT/NOV/DEC	525	875	1,096
JAN/FEB/MAR	15	0	0	JAN/FEB/MAR	543	0	0
APR/MAY/JUNE	48	0	0	APR/MAY/JUNE	719	0	0

GOALS AND ACTUAL NEW CLUBS CUMULATIVE



GOALS AND ACTUAL MEMBERS CUMULATIVE



DROPPED CLUBS: 10	588 CLUBS OF 1,397 ADDED 1 OR MORE NEW MEMBERS	<u>GENDER DISTRIBUTION</u>		
<u>DROPPED MEMBERS</u>		MALE	28,765 (68.29%)	
		FEMALE	13,336 (31.66%)	
		NON BINARY	4 (0.01%)	
		PREFER NOT TO ANSWER	15 (0.04%)	
DECEASED	268	CLICK HERE FOR CUMULATIVE MEMBERSHIP DATA	TOTAL FAMILY UNIT MEMBERS	0
CLUB CANCELLED	56		FAMILY MEMBERS PAYING HALF DUES	0
OTHER	1,704			
TOTAL	2,028			